

Out Of The Shadows

Designed by Sue Harvey & Sandy Boobar of Pine Tree Country Quilts
Featuring the Shades of Grey Collection by Nancy Gere
Size: 50" x 70"



Check www.windhamfabrics.com Free Project section to see if there are any pattern updates before you start your quilt project



WINDHAM FABRICS

812 Jersey Ave ~ Jersey City, NJ 07310 ~ 201.659.0444 ~ FAX: 201.659.9719
www.windhamfabrics.com email: retail@windhamfabrics.com

Out Of The Shadows

Page 2

Materials

- A. 1 1/8 yards large floral – 41290-X
- B. 7/8 yard dark small floral – 41291-1
- C. 7/8 yard light small floral – 41291-2
- D. 5/8 yard dark vine – 41292-1
- E. 3/8 yard light vine – 41292-2
- F. 5/8 yard dark print – 41293-1
- G. 3/8 yard light print – 41293-2
- H. 7/8 yard medium print – 41293-3
- I. 1 1/2 yards dark dot – 41295-1
- J. 1 1/8 yards light dot – 41295-2

4 1/8 yards backing of choice
72" x 83" batting piece



41293-2 Bone



41290-X Multi



41291-1 Charcoal



41291-2 Bone



41292-1 Charcoal



41292-2 Bone



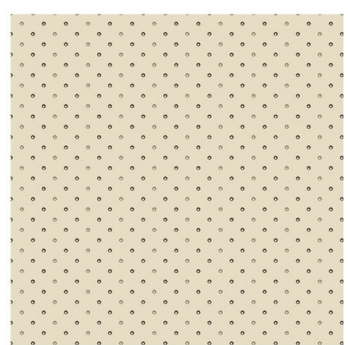
41293-1 Charcoal



41293-3 Stone



41295-1 Charcoal



41295-2 Bone



WINDHAM FABRICS

Out Of The Shadows

Page 3

Cutting Directions

WOF = width of fabric from selvage to selvage.

Fabric A

- Cut seven 4 1/2" x WOF strips for outer border.

Fabric B

- Cut six 4 1/2" x WOF strips; recut into forty-eight 4 1/2" squares.

Fabric C

- Cut six 4 1/2" x WOF strips; recut into forty-eight 4 1/2" squares.

Fabrics D & F

- Cut two 8 7/8" x WOF strips each fabric; recut into eight 8 7/8" squares each fabric.

Fabrics E & G

- Cut one 8 7/8" x WOF strip each fabric; recut into four 8 7/8" squares each fabric.

Fabric H

- Cut three 8 7/8" x WOF strips; recut into twelve 8 7/8" squares.

Fabric I

- Cut two 8 7/8" x WOF strips; recut into eight 8 7/8" squares.
- Cut four 1 1/2" x WOF strips for vertical sashing.
- Cut eight 2 1/4" x WOF strips for binding.

Fabric J

- Cut one 8 7/8" x WOF strip; recut into four 8 7/8" squares.
- Cut five 1 1/2" x WOF strips for vertical sashing.
- Cut six 2" x WOF strips for inner border.

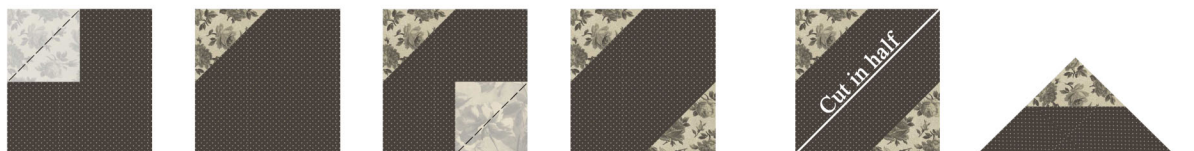
Backing of Choice

- Cut two 72" x WOF backing pieces.

Block Assembly

Use a 1/4" seam allowance for all stitching.

1. Draw a diagonal line from corner to corner on the wrong side of each 4 1/2" fabric B and C square.
2. Place a marked fabric C square right sides together on one corner of an 8 7/8" fabric I square. Stitch on the line. Trim seam allowance 1/4" away from the stitching. Press the fabric C triangle open. Repeat on the opposite corner of the fabric I square. Cut the square in half on the unpieced diagonal to complete two dark triangle units.



Dark Triangle Unit
Make 48



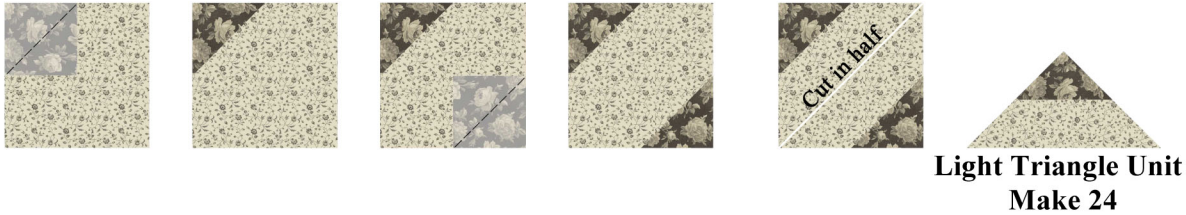
WINDHAM FABRICS

Out Of The Shadows

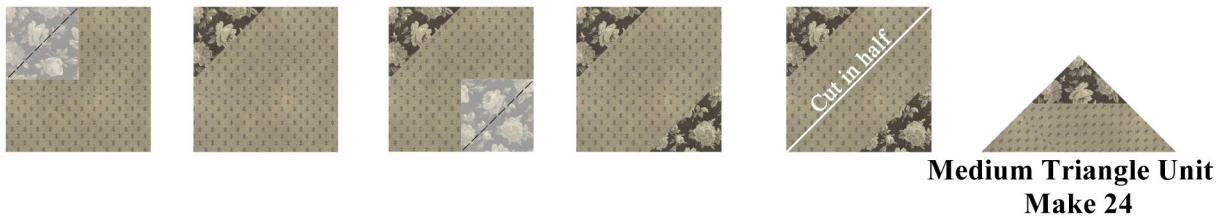
Page 4

3. Repeat step 2 with the remaining fabric I squares and the 8 7/8" fabric D and fabric F squares to make a total of 48 dark triangle units.

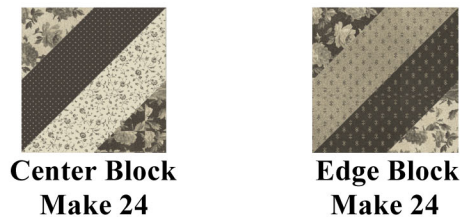
4. Repeat step 2 with the marked fabric B squares and 8 7/8" fabric E, fabric J and fabric G squares to make 24 light triangle units.



5. Repeat step 2 with the remaining marked fabric B squares and the 8 7/8" fabric H squares to make 24 medium triangle units.



6. Sew a light triangle unit to a dark triangle unit to complete one 8 1/2" x 8 1/2" Center block. Press seam toward the dark triangle unit. Repeat to make a total of 24 blocks.



7. Stitch a medium triangle unit to a dark triangle unit to complete one 8 1/2" x 8 1/2" edge block. Press seam toward the dark triangle unit. Repeat to make a total of 24 blocks.

Out Of The Shadows

Page 5

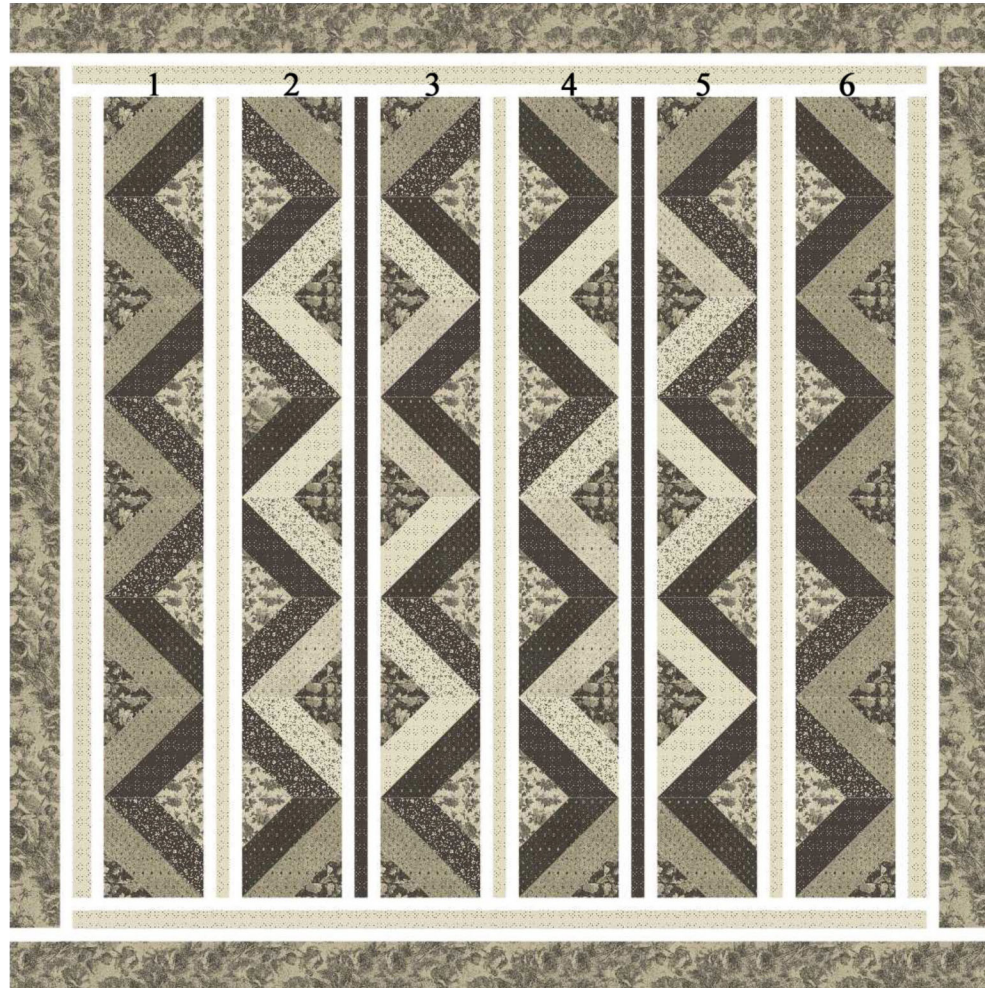
Quilt Assembly

Refer to the exploded quilt diagram as needed throughout the following steps.

1. Arrange and join eight Edge blocks to make the $8\frac{1}{2}$ " x $64\frac{1}{2}$ " row 1. Press seams to one side. Repeat to make row 6.

2. Arrange and join six Center blocks and two Edge blocks to make the $8\frac{1}{2}$ " x $64\frac{1}{2}$ " row 2. Press seams to one side. Repeat to make rows 3, 4 and 5.

3. Sew the $1\frac{1}{2}$ " x WOF fabric J strips short ends together to make a long strip. Press seams to one side. Cut into three $64\frac{1}{2}$ " lengths for vertical sashing. Repeat with the $1\frac{1}{2}$ " x WOF fabric I strips, cutting only two $64\frac{1}{2}$ " lengths.



4. Join the block rows with the sashing strips to complete the $53\frac{1}{2}$ " x $64\frac{1}{2}$ " quilt center. Press seams toward the sashing strips.

5. Sew the 2" x WOF fabric J strips short ends together to make a long strip. Press seams to one side. Cut into two $64\frac{1}{2}$ " lengths and two $56\frac{1}{2}$ " lengths. Stitch the longer strips to the long sides of the quilt center and the shorter strips to the top and bottom. Press seams toward the strips.

7. Repeat step 5 with the $4\frac{1}{2}$ " x WOF fabric A strips to complete the top, cutting two $67\frac{1}{2}$ " lengths and two $64\frac{1}{2}$ " lengths.

8. Remove the selvage edges from the backing pieces. Join the pieces on the long edges with a $\frac{1}{2}$ " seam allowance. Press seam open. Trim the edges to make a 72" x 83" backing piece.

9. Layer the top with the backing and 72" x 83" batting piece. Quilt as desired. Trim edges even with the top.

10. Prepare fabric I binding and bind edges using your favorite method.



WINDHAM FABRICS